



Title	SUBSTANCE ABUSE
Reference Number	F601
Section	Students
Written By	BOT Policy Committee
Checked By	BOT Policy Committee
Approved By	NPBHS Board of Trustees
Issue Date	April 2016
Review Date	April 2019
Associated Policies	
Associated Procedures	Surveillance, Search and Seizure/Testing/Investigations/Board of Trustees hearings related to alleged substance abuse.

NOTE:

Associated procedures are those on :

- a. Surveillance, search and seizure ;
- b. Testing ;
- c. Investigations ; and
- d. Board of Trustee hearings relating to alleged substance abuse.

In addition, there are three guideline documents available for the assistance of those involved in the procedures, namely :

- i. Flow Chart of process/options where a student is suspected of being involved in an incident of substance abuse.
- ii. Suggestions for advocates for students involved in the processes.
- iii. Advice for Board Members sitting at disciplinary hearings.

For convenience all of these documents are attached as appendices to this policy.

DEFINITIONS

1. For the purposes of this policy and underlying procedures and guideline documents, "banned substance" is defined as:
 - Any medication or drug whether illegal or not. The exception to this policy is medication prescribed by a medical practitioner and/or dispensed by Student Services.
 - Any substance that gives off fumes, vapour or gases which may be used by the person in possession of it to give an intoxicating, stimulating or hallucinogenic effect when inhaled.
 - Any fermented, distilled or spiritous liquor, which contains a percentage of alcohol.
 - Any tobacco or cigarettes containing tobacco.

2. For the purposes of this policy and underlying procedures and guideline documents, “school campus” is defined as including, in addition to the school grounds at 107 Coronation Avenue, New Plymouth:
 - i. Any place beyond the school grounds where an activity within the organisation and control of the school takes place, including inside vehicles being used to transport students to and from such places or being used in the course of such activities.
 - ii. Any public place where a student is present and recognisable as a student of the school, i.e. wearing any article of clothing identifiable as NPBHS school uniform.
 - iii. Any vehicle used to transport a student to or from school.
3. For the purposes of this policy and underlying procedures and guideline documents, “substance abuse” is defined as any possession, use, dealing or attempting to deal in, with or in relation to a banned substance.

SURVEILLANCE, SEARCH AND SEIZURE PROCEDURES

A. SURVEILLANCE

1. Where there is reasonable cause for the management of the school to suspect that a student and/or employee is engaging in an activity which is illegal or injurious or against the school rules (including but not limited to substance abuse) some system of surveillance may be employed with a view to obtaining evidence as to whether such activities are indeed occurring.
2. Depending on the circumstances, such surveillance may be either overt or covert.
3. Whatever system of surveillance is adopted, the reasonable rights to privacy of those who are under surveillance will be respected and recognised so far as practicable in the way in which surveillance is carried out.
4. Where as a result of a system of surveillance, a student or employee is interviewed regarding his or her conduct, he/she will have the right to view the evidence obtained by surveillance before any conclusion of impropriety is reached by the management of the school.

B. SEARCH

1. Where there is reasonable cause to suspect that a student is unlawfully in possession of something or in possession of something which is illegal in itself and/or potentially injurious and/or against the school rules, a search of the student’s possessions or person may be instigated by the management of the school.
2. Wherever practicable when such a search is initiated, the person conducting the search shall arrange for an adult witness to the search.
3. Wherever practicable the student shall be asked himself to display the contents of his possessions and of such items of clothing as may have been used to conceal the suspected items.
4. Where it is determined that a so-called “strip search” is required, the student’s parents or caregivers shall be advised and their presence requested. If they are not available, and circumstances warrant, the Police may be called to witness the search (and may be called in any event). School staff will make no contact with the person of any student undergoing a strip search. Any such search is to be carried out by a male teacher, in the presence of an adult witness.
5. Students may decline to have their personal possessions searched but must then be advised that failure to consent may be interpreted as confirming that the initial suspicion of improper conduct is justified.
6. Where a staff member has reasonable cause to suspect that one or more members of a class may be unlawfully in possession in the way outlined in paragraph B.1, a search involving all members of the class may be conducted. In such a case, paragraphs B.2, B.3, B.4 and B.5 will apply.



7. In an effort to ensure the existence and continuation of a school campus free of banned substances, the management of the school may invite the Police or other accredited agencies to bring in "sniffer dogs" to search for banned substances on the school campus.

C. SEIZURE

1. Where a student has in his possession :
 - * something it is unlawful to possess ; or
 - * an illegal item ; or
 - * an injurious item ; or
 - * something that contravenes the school rules ;this may be confiscated by a staff member.
2. A student who fails to hand over such an item on request will be in breach of the school rules and in breach of this procedure and the substance abuse policy under which it is formulated, and accordingly liable to punishment.
3. Any item confiscated is to be put in a safe place by the staff member concerned and the student advised when and under what conditions the item may be returned. For these purposes, the offices of the Principal, Deputy Principal or Assistant Principal are deemed to be safe places.
4. Illegal items or those unlawfully in the student's possession will not be returned to the student but other items may be claimed immediately by the parents of the student provided they do so in person via the school office or otherwise returned to the student within seven days of confiscation.
5. Where an item is repeatedly confiscated, its return may be delayed for up to one term and it may be released only to a parent of the student from whom it is confiscated (or last confiscated as the case may be).
6. The school accepts no responsibility for the loss of any confiscated item whether possession of the item is illegal, where it is unlawfully in the possession of the student or where possession of it is contrary to the school rules.

TESTING PROCEDURE

1. A student shall be required to undergo a test if the Principal, Acting Principal or Deputy Principal has reasonable cause to suspect that the student is under the influence of a substance as defined in the Substance Abuse Policy.
2. The parents or caregiver of a student suspected of being under the influence of such a substance will be advised immediately and shall be asked to be present while their son is being tested.
3. If the parents or caregiver are not available then the student will be advised of his right to have a representative or other appropriate support person present during the testing procedure.
4. The parents or caregiver will be asked to supervise the collection of a urine and/or saliva sample in a nominated area on the school site. This collection shall be carried out privately and in a manner which minimises any possible embarrassment to the student and his parents or caregiver.
5. Prior to obtaining the urine and/or saliva sample the student shall be advised in the presence of his parents, caregiver or representative of
The grounds for the suspicion that he is under the influence of a substance.
and
The purpose of the test and the possible outcomes if the test is positive.
6. The test shall be carried out using a commercially available testing kit and it shall be conducted in accordance with the manufacturer's instructions.
7. The sample shall be obtained in a container and in a manner that is in accordance with the manufacturer of the test kits instructions.
8. The test will be carried out in the presence of the student and his parents, caregiver or representative and they will be advised of the result and its interpretation.



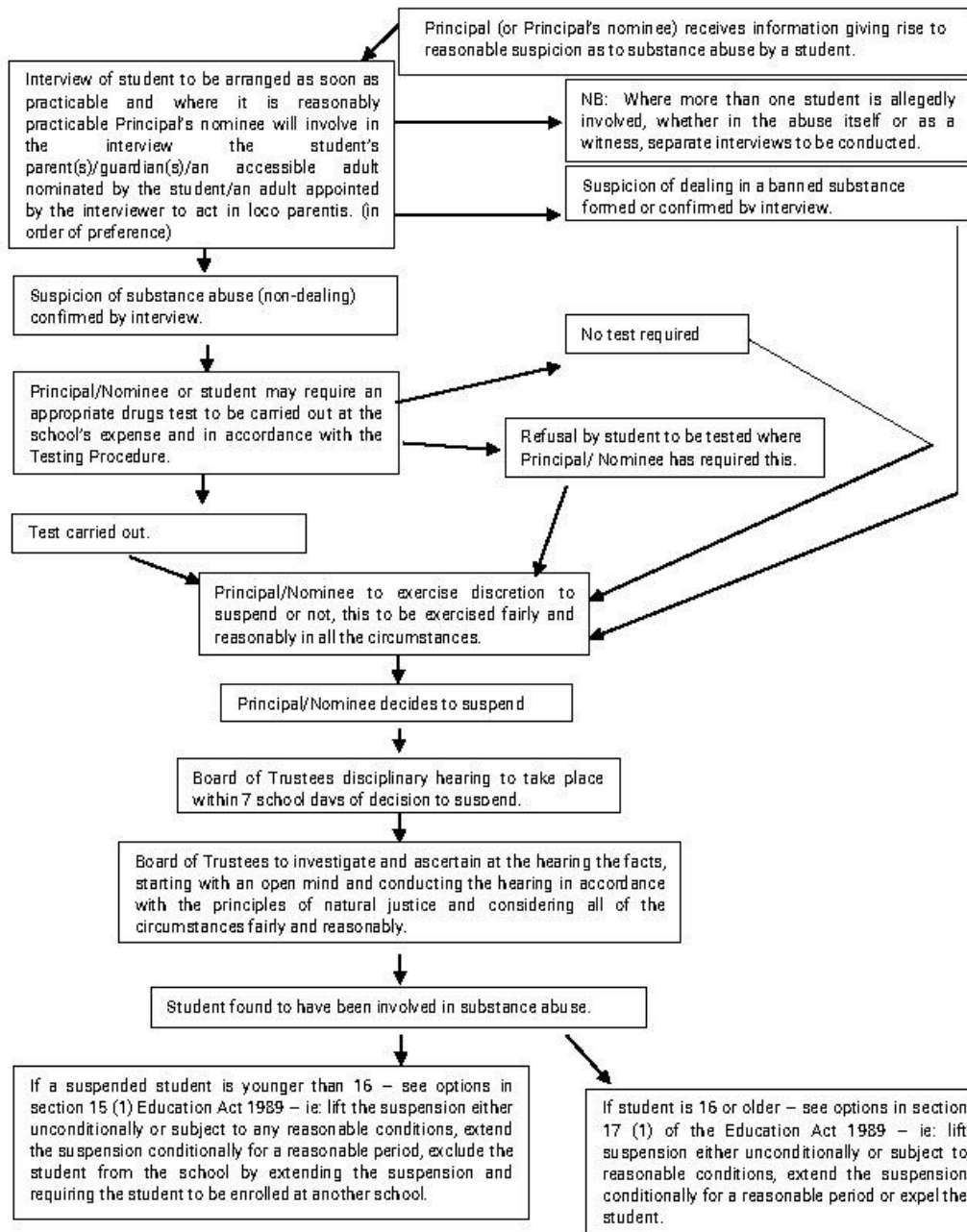
9. The handling and disposal of body fluids and testing equipment shall be undertaken in accordance with guidelines issued by Health Authorities.

INVESTIGATION PROCEDURE

1. Where the Principal or his nominee receives information giving rise to reasonable suspicion of substance abuse by a student, the procedure outlined in the flow chart attached is to be followed.
2. Further to the notes contained in the flow chart:
 - 2.1 At the interviewing stage of cases where there is a substantive suspicion of substance abuse and where a decision to suspend may result, then before any decision to suspend is made and where it is reasonably practicable to do so the interviewer will involve in the interview parents/guardians/an accessible adult nominated by the student/an adult appointed by the interviewer (those options to be considered in that order).
 - 2.2 In cases where there is evidence of involvement with a banned substance it shall be at the discretion of the Principal or his nominee as to whether the Police are notified.
 - 2.3 A register will be developed of adults who are willing and may be able to accept nomination by a boy or appointment by an interviewer to attend interviews of the type described above and to act in loco parentis.
 - 2.4 A guideline document is to be developed entitled "Suggestions for advocates for school suspension/expulsion hearings".
 - 2.5 Where there is a substantive suspicion of substance abuse or possession of a banned substance for supply, the Principal or his nominee may require, and the student shall have the right to require, an appropriate drugs test to be carried out at the school's expense.
 - 2.6 If a student refuses to undergo a test without providing good reason then an inference may be drawn from that refusal, together with any other evidence, that the student is under the influence of a banned substance of the kind sought to be tested for.
 - 2.7 The Principal or his nominee shall exercise his discretion whether or not to suspend a student for substance abuse (not involving dealing) after the results of any drug test are known or following a refusal by the student to be tested.
 - 2.8 Where there is a substantive suspicion of possession of a banned substance for supply at school (dealing) then the Principal or his nominee shall exercise his discretion to suspend or not fairly and reasonably having regard to the evidence available.

FLOW CHART OF PROCESS/OPTIONS WHERE A STUDENT IS SUSPECTED OF BEING INVOLVED IN AN INCIDENT OF SUBSTANCE ABUSE





BOARD OF TRUSTEES DISCIPLINARY HEARING PROCEDURE

1. Where the Principal or his nominee has decided to suspend a student for substance abuse then the Board of Trustees must hold a disciplinary hearing within seven school days of that decision being made.
2. A formal written agenda and statements to be used by the chairman of a Board of Trustees disciplinary hearing is to be drawn up providing some general guidelines intended to ensure the fairness of the procedure followed by the Board at such hearings.
3. A document entitled "Guidelines for Board Members Attending Disciplinary Hearings" is to be drawn up for use by Board of Trustee members.
4. At a disciplinary hearing the Board of Trustees members attending are to investigate and ascertain at the hearing the facts, beginning with an open mind and conducting the hearing in accordance with the principles of natural justice and considering all of the circumstances fairly and reasonably.
5. Where following such investigation the student is found to have been involved in substance abuse then the board will in determining what action to take be guided by Sections 15(1) (in the case of the student being younger than 16) and 17(1) (where the student is 16 or older) of the Education Act 1989.
6. A "second chance option" is to be considered under which a student whom the Board of Trustees decides to exclude from the school may re-apply for admission at some future time provided certain conditions are met.

BE THE EXAMPLE



BE THE EXAMPLE

